

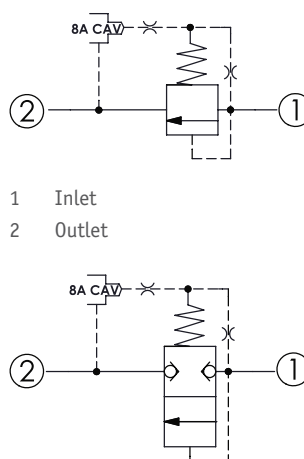
CRP-10A - Relief valve

Pilot operated, balanced poppet relief main stage with integral 8A control cavity

1 Available versions

Ordering example:

| | | | |
|---------|-----------|--------|----|
| CRP-10A | -2G | -D | -8 |
| Type | Operation | Spring | |



Operation

| Coding | Description |
|--------|-----------------|
| 2G | Balanced poppet |

Spring

| Coding | Minimum control pressure | |
|--------|--------------------------|-------|
| | (bar) | (psi) |
| D | 1.7 | 25 |
| W | 7 | 100 |

i INFORMATION

W spring is suit for higher pressure drop application. Please consult HAWE.

2 Technical data

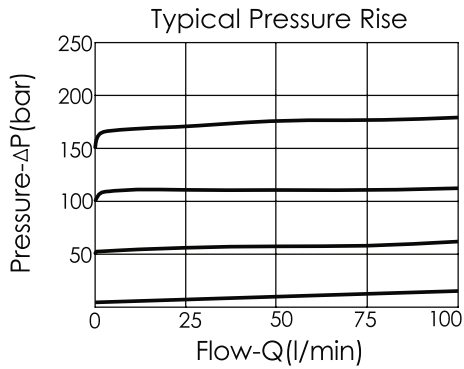
| | |
|------------------------------|------------|
| Operating pressure p_{max} | 350 bar |
| Flow rate Q_{max} | 95 l/min |
| Installation torque | 40 - 50 Nm |
| Cavity | T-10A |

Weight 0.09 kg

i INFORMATION

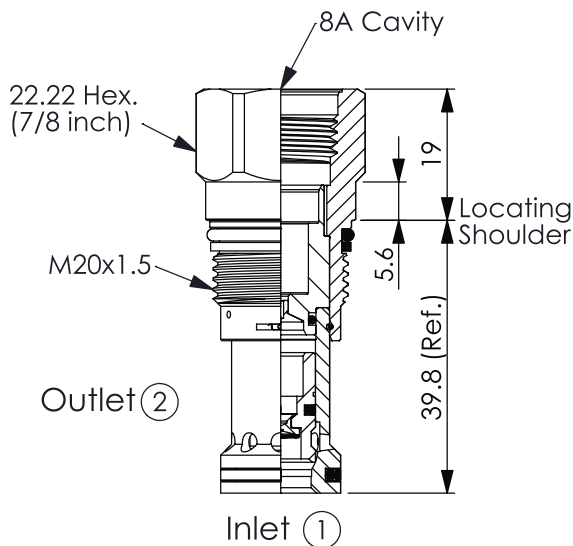
- Will accept maximum pressure at port 2; suitable for use in cross port relief circuits.
- Response time-typical (2 ms)
- Maximum leakage at 10 % reseat approximately (0.7 cm³/min)
- If the pressure drop of relief valve is high, it easily occurs cavitation which cause noise and manifold erosion. In order to improve this situation, please select balanced poppet structure.

Characteristic lines



3 Dimensions

All dimensions in mm, subject to change.



4 Other information

see [Technical information HAWE cartridge valves: D 8219](#)

see [Recommendation for hydraulic fluid: D 5488/1](#)

HAWE Hydraulik SE

Einsteinring 17 | 85609 Aschheim/Munich | P.O. Box 11 55 | 85605 Aschheim | Germany
Phone +49 89 379100-1000 | info@hawe.de | www.hawe.com

